

# Human HVEM/TNFRSF14 Protein

Cat. No. HVE-HM211

## Description

<b>Source</b>	Recombinant Human HVEM/TNFRSF14 Protein is expressed from HEK293 with hFc tag at the C-Terminus. It contains Leu39-Val202.
<b>Accession</b>	Q92956-1
<b>Molecular Weight</b>	The protein has a predicted MW of 44.3 kDa. Due to glycosylation, the protein migrates to 60-70 kDa based on Bis-Tris PAGE result.
<b>Endotoxin</b>	Less than 1 EU per $\mu\text{g}$ by the LAL method.
<b>Purity</b>	>95% as determined by Bis-Tris PAGE

## Formulation and Storage

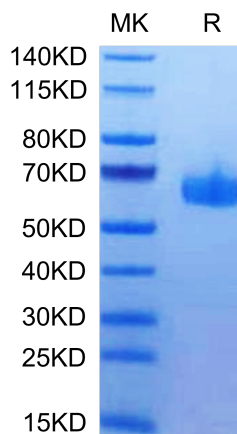
<b>Formulation</b>	Lyophilized from 0.22 $\mu\text{m}$ filtered solution in PBS (pH 7.4). Normally 8% trehalose is added as protectant before lyophilization.
<b>Reconstitution</b>	Centrifuge the tube before opening. Reconstituting to a concentration more than 100 $\mu\text{g}/\text{ml}$ is recommended. Dissolve the lyophilized protein in distilled water.
<b>Storage</b>	-20 to -80°C for 12 months as supplied from date of receipt. -80°C for 3 months after reconstitution. Recommend to aliquot the protein into smaller quantities for optimal storage. Please minimize freeze-thaw cycles.

## Background

Herpesvirus entry mediator (HVEM), also known as tumor necrosis factor receptor superfamily member 14 (TNFRSF14), is a human cell surface receptor of the TNF-receptor superfamily. Two TNF superfamily ligands lymphotoxin  $\alpha$  (TNF- $\beta$ ) and LIGHT (TNFSF14) are identified as cellular ligands for HVEM and initiate the positive signaling.

## Assay Data

### Bis-Tris PAGE

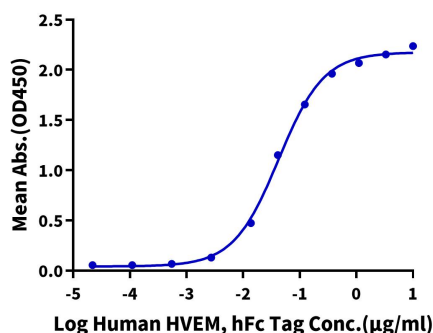


Human HVEM on Bis-Tris PAGE under reduced condition. The purity is greater than 95%.

### ELISA Data

#### Human HVEM, hFc Tag ELISA

0.1  $\mu\text{g}$  Human BTLA, His Tag Per Well



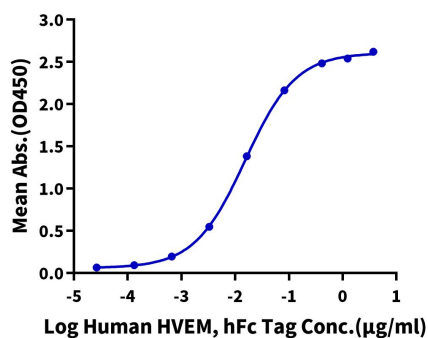
Immobilized Human BTLA, His Tag at 1  $\mu\text{g}/\text{ml}$  (100  $\mu\text{l}/\text{Well}$ ). Dose response curve for Human HVEM, hFc Tag with the EC<sub>50</sub> of 42.5  $\text{ng}/\text{ml}$  determined by ELISA (QC Test).

Assay Data

ELISA Data

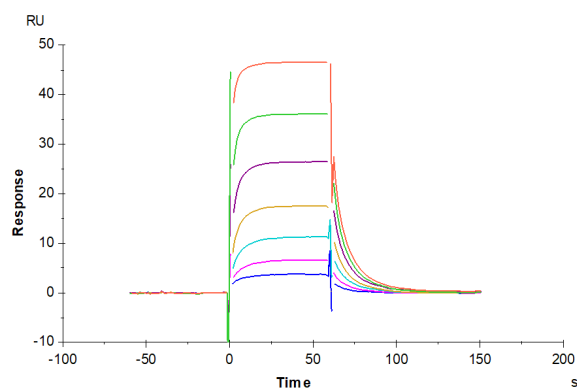
**Human HVEM, hFc Tag ELISA**

0.2µg Human LIGHT, His Tag Per Well



Immobilized Human LIGHT, His Tag at 2 µg/ml (100 µl/Well) on the plate. Dose response curve for Human HVEM, hFc Tag with the EC50 of 15.3 ng/ml determined by ELISA.

SPR Data



Human HVEM, hFc Tag captured on CM5 Chip via Protein A can bind Human CD160, His Tag with an affinity constant of 1.44 µM as determined in SPR assay (Biacore T200).